



## SR 49 American River Confluence Study

### Frequently Asked Questions

#### ABOUT THE STUDY

What is the purpose of the SR 49 American River Confluence Study?

**Answer:** The purpose of The SR 49 American River Confluence Study is to examine infrastructure characteristics, corridor operations, and collision history to inform recommended improvements for parking access, new transit/shuttle services, safety, and operational efficiency. The feasibility of establishing a free seasonal shuttle service and a means to fund the service is a key objective. The study will also examine opportunities for improving the emergency evacuation potential of the corridor.

What are the issues currently being experienced along the SR 49 study corridor?

Generally, the corridor reflects the following characteristics:

- lack of pedestrian treatments/accommodations along SR 49;
- lack of parking accommodations – particularly just east of the SR 49 bridge and the Calcutta Falls Trail Head;
- lack of transit/shuttle services;
- need for improved crossings for those who desire to walk across SR 49;
- lack of pedestrian connectivity to points of interest along the corridor (i.e., trail heads); and,
- recent collision history (2016-2020) of the study corridor indicates 10 fatalities and 52 serious injury related collisions.

Who is responsible for the SR 49 American River Confluence Study?

**Answer:** The SR 49 American River Confluence Study is being conducted by the El Dorado County Transportation Commission (EDCTC) in partnership with Caltrans, California State Parks, the County of El Dorado, the City of Auburn and the Placer County Transportation Planning Agency.

If a new shuttle service is considered feasible, will it replace the current shuttle service being provided by the City of Auburn?

**Answer: No.** If a shuttle service is recommended for the SR 49 American River Confluence study corridor, it will likely augment the shuttle service currently being provided by the City of Auburn rather than replace it. Only small portions of the corridor will enjoy redundant shuttle service assuming concurrent operation.

Is the SR 49 American River Confluence Study part of the Greater Placerville Wildfire Evacuation Preparedness Study Community Safety and Resiliency Plan?

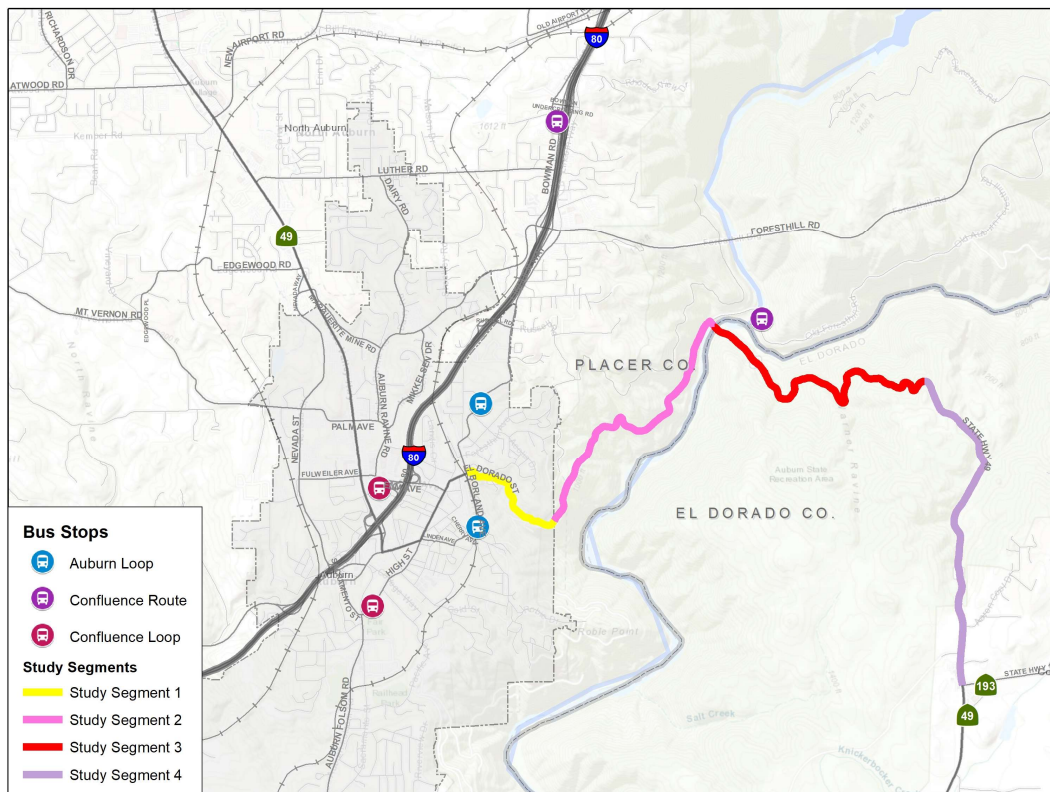
**Answer: No.** The SR 49 American River Confluence Study is specific to the SR 49 corridor between the City of Auburn in Placer County and the unincorporated community of Cool in El Dorado County (see map). Establishing a free shuttle service to serve the study corridor is the primary objective. Conversely, the Greater Placerville Wildfire Evacuation Preparedness Study Community Safety and Resiliency Plan will focus specifically on wildfire evacuation, infrastructure assets to facilitate a evacuation event, and needed infrastructure improvements to maximize resilience in the event of a wildfire.

How much does the study cost and how is it being paid for?

**Answer:** The project budget to develop the SR 49 American River Confluence Study is \$150,000.

What are the plan’s project limits?

**Answer:** The corridor is approximately seven miles in length and extends from the intersection at High Street in Auburn to the juncture of SR 193 in Cool. The two endpoint intersections within the study area are Lincoln/Borland Way in the City of Auburn and at the juncture of SR 193/SR 49 in Cool. (See Study Corridor Map showing segmentation and existing Shuttle service stops):



How does this study differ from a planning-level conceptual study?

**Answer:** The study will determine the financial feasibility for establishing a new shuttle service in the corridor and recommend infrastructure improvements to formalize parking and safely accommodate shuttle stops. Planning level cost estimates of recommended improvements will be developed. To better ensure funding feasibility, the benefits of the proposed improvements will be monetized consistent with applicable state/federal competitive grant programs.

How long will the study take to complete?

**Answer:** The study will take approximately twelve (12) months to complete. It began in September 2021 and is scheduled to be completed by September 2022.

Who is performing the study?

**Answer:** The consultant team comprising of DKS Associates and Kimley-Horn have been retained to perform the study.

**PUBLIC OUTREACH**

How can I participate in the SR 49 American River Confluence Study?

**Answer:** There will be multiple opportunities for the public to provide input, including attending public workshops, other public meetings, and utilizing the project webpage <https://www.americanriverat49.com> to review project information and provide comments. The website will evolve to include a community survey, comment options, meeting agendas and summaries, and other relevant materials prepared as part of the planning effort. The website also includes an interactive web-based mapping tool that will allow the public to provide comments throughout the course of the study. Comments can be placed at specific locations on the map to accurately denote where there is a concern (i.e., safety, congestion, etc.) or where a desired improvement is wanted. The interactive mapping tool for public input is available in 80 languages for equitable use by all. The public is also invited to attend regularly scheduled EDCTC Board meetings to learn more about the plan and to provide comments.

How many public workshops are being held for the study?

**Answer:** Public workshops will be held virtually, target timeframes within the Spring 2022 and Summer 2022. The first public workshop will provide an overview of the project and will seek the public's insight into specific areas or locations that present operational or safety issues in the study area. That information, along with data and analysis developed by the project team, will be used to inform the study's proposed infrastructure improvements. The second public workshop will provide the public with an opportunity to review and comment on the proposed improvements.

What is the Stakeholder Advisory Committee?

**Answer:** The Stakeholder Advisory Committee (SAC) is made up of a diverse range of groups and organizations based primarily within the study area. The role of each SAC representative will be to help guide the study and to communicate their group's specific interests in the corridor. A list of SAC members is available on the project webpage: <https://www.americanriverat49.com>

**For further information please contact:**

**Kendall Flint, Community Engagement Lead  
DKS Associates  
Email: [kendall.flint@dksassociates.com](mailto:kendall.flint@dksassociates.com)**

Or,

**Woody Deloria, Executive Director  
El Dorado County Transportation Commission  
Email: [wdeloria@edctc.org](mailto:wdeloria@edctc.org)**

Or,

**Jim Damkowitch, Project Manager  
DKS Associates  
Email: [jim.damkowitch@dksassociates.com](mailto:jim.damkowitch@dksassociates.com)**