



Greater Placerville
**WILDFIRE EVACUATION
PREPAREDNESS STUDY**

DIAMOND SPRINGS COMMUNITY MEETING



SHAPING A SMARTER
TRANSPORTATION EXPERIENCE™
DKSASSOCIATES.COM

AN EMPLOYEE-OWNED COMPANY



INTRODUCTIONS

DAN BOLSTER

EDCTC

Agency PM

DBolster@edctc.org

530.642.5262

KENDALL FLINT

DKS Associates

Public Outreach Lead

kendall.flint@dksassociates.com

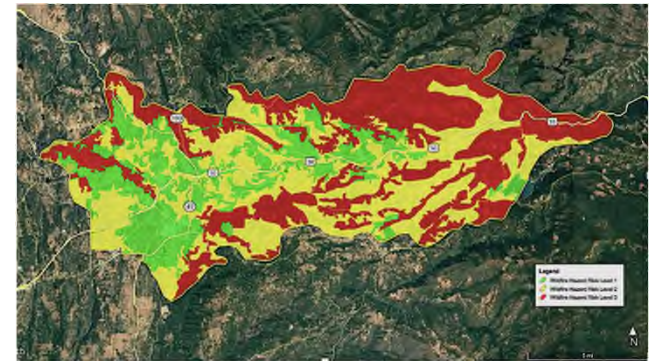
650.455.1201



PROJECT OVERVIEW

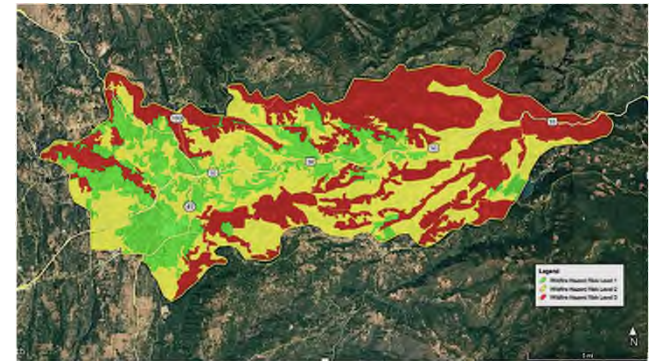
PROJECT OVERVIEW

- The study is developing a wildfire evacuation preparedness plan for the Greater Placerville area.
- To date the study has identified wildfire hazard areas, the location of vulnerable populations, critical facilities and points of concern for those facilities during a wildfire event.
- Ultimately the study will identify projects needed to better facilitate community evacuation during catastrophic wildfire scenarios.



PROJECT OVERVIEW

- The report will be a resource for the City of Placerville, El Dorado County, CAL FIRE, Caltrans, United States Forest Service, PG&E, El Dorado Irrigation District, other agencies, and the public.



PROJECT PARTNERS

- CAL FIRE
- California Highway Patrol
- California Office of Emergency Services
- Caltrans
- Office of the State Fire Marshall
- United States Forest Service
- City of Placerville
- El Dorado Irrigation District
- El Dorado County Chief Administrative Office
- El Dorado County Resource Conservation District
- El Dorado County Fire Safe Council
- El Dorado County Fire District
- El Dorado County Office of Emergency Services
- El Dorado County Emergency Services Authority Joint Powers Authority
- El Dorado County Sheriff's Office
- El Dorado County Transportation Department
- El Dorado County Planning Services
- El Dorado County Air Quality Management District
- El Dorado County Health Department
- El Dorado County Disaster Preparedness and Response
- El Dorado County Office of Education
- El Dorado County Animal Shelter
- El Dorado County Transit Authority
- El Dorado Communications Networks
- Marshall Hospital
- Pacific Gas and Electric Company (PG&E)
- Sacramento Area Council of Governments (SACOG)
- Sacramento Municipal Utility District (SMUD)
- Sierra Pacific Industries

WHY NOW?



WILDFIRE ASSESSMENT

- Identified regionally significant wildfire hazard risk level categories;
- Identified the specific setting elements that influence fire behavior;
- Identified the mechanistic relationship that the nature of each setting element has with wildfire hazard level level
- Mapped the distribution of these categories within the Placerville Study Area
- Regional risk was determined to be in the medium-to-medium high for the Placerville Project Study Area



2

DEMOGRAPHICS & HIGH RISK COMMUNITIES

SOCIAL SENSITIVITY INDEX INDICATORS

SOCIAL SENSITIVITY INDICATOR	INDICATOR DESCRIPTION	PERCENTAGE OF POPULATION OR HOUSEHOLDS IN THE GREATER PLACERVILLE AREA
Median Family Household Income ^A	Median Family Household Income	N/A
Median Non-Family Household Income ^B	Median Non-Family Household Income	N/A
People experiencing homelessness ^C	Individuals who currently lack fixed, regular, and adequate housing	0.3%
Undocumented individuals ^D	Individuals residing in the United States without legal documentation	1.2%
Unemployed	Individuals 16 and older who are out of work and able to work but are not	5.7%
Seniors	Individuals 65 years or older	24.7%
Young Children	Individuals 5 years and younger	3.9%
People of Color	All individuals that do not identify as white	16.0%
Renters	Housing units that are renter occupied	23.1%
Outdoor Workers	Individuals who are employed, 16 and older, and work outdoors	7.4%
Visitors	Individuals who are not residents and are visiting the study area for a limited time	Not Available
Linguistically Isolated	Households with individuals who are non or limited English-speaking	2.0%
American Native and Alaskan Native	Individuals that identify as American Native or Alaskan Native	0.8%
Individuals with Disabilities	Individuals with access and functional needs (physical and mental)	14.7%
Individuals with Asthma	Individuals diagnosed with asthma	9.2%
Individuals with Coronary Artery Disease ^E	Individuals diagnosed with coronary artery disease	6.0%
Individuals without access to a vehicle	Households without access to a vehicle	5.5%
Individuals without health insurance	Individuals aged 18 to 64 years old currently uninsured	3.7%
Households without a computer	Households without access to a computer.	7.3%
Households without broadband internet	Households without access to broadband internet.	14.6%

VULNERABLE & DISADVANTAGED COMMUNITIES

INDIVIDUALS WITH HIGH-OUTDOOR EXPOSURE

- People experiencing homelessness
- Outdoor workers
- Visitors

INDIVIDUALS WITH CHRONIC HEALTH CONDITIONS OR HEALTH-RELATED SENSITIVITIES

- Seniors
- Young children
- Individuals with disabilities
- Individuals with asthma
- Individuals with cardiovascular disease

VULNERABLE & DISADVANTAGED COMMUNITIES

UNDER-RESOURCED INDIVIDUALS

- Low-income households
- Unemployed individuals
- Individuals without health insurance
- Households without a computer
- Households without broadband internet
- Geographically isolated individuals
- Individuals without access to a vehicle
- Renters

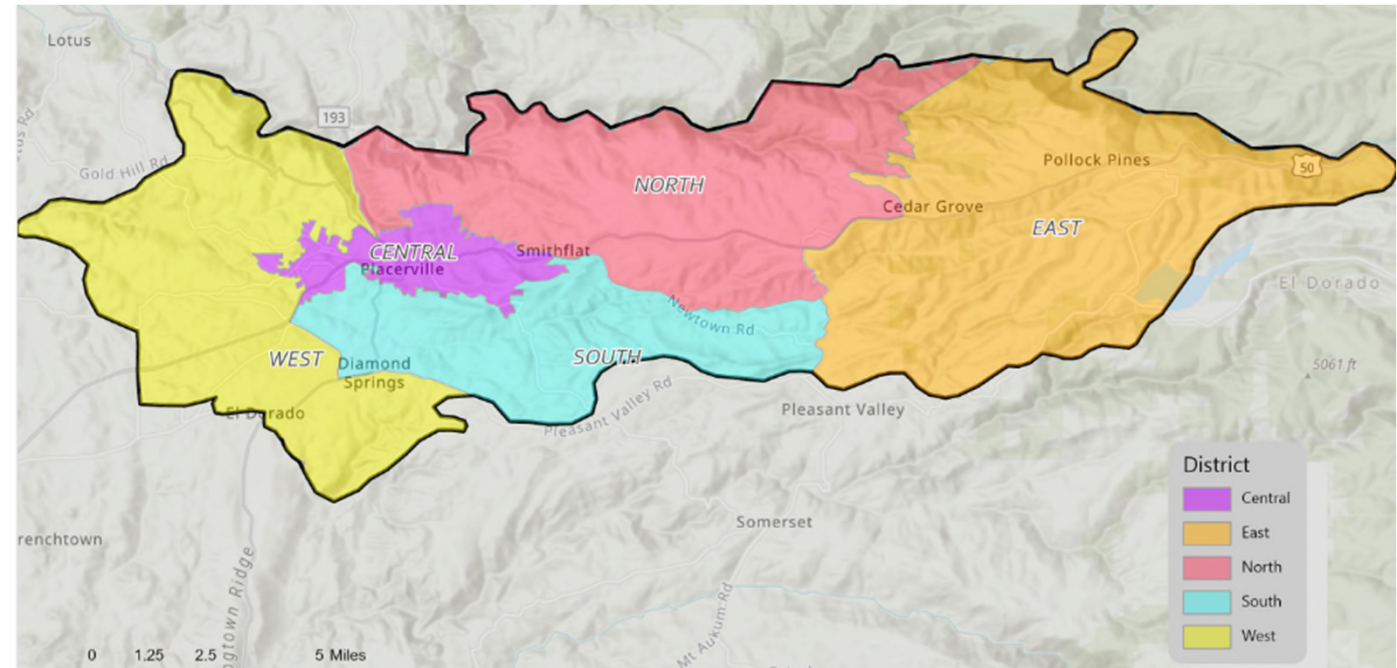
INDIVIDUALS FACING SOCIETAL BARRIERS

- People of color
- Native Americans
- Linguistically isolated
- Undocumented individuals

VULNERABLE & DISADVANTAGED COMMUNITIES

TABLE 2. GENERAL LOCATIONS OF SENSITIVE POPULATIONS

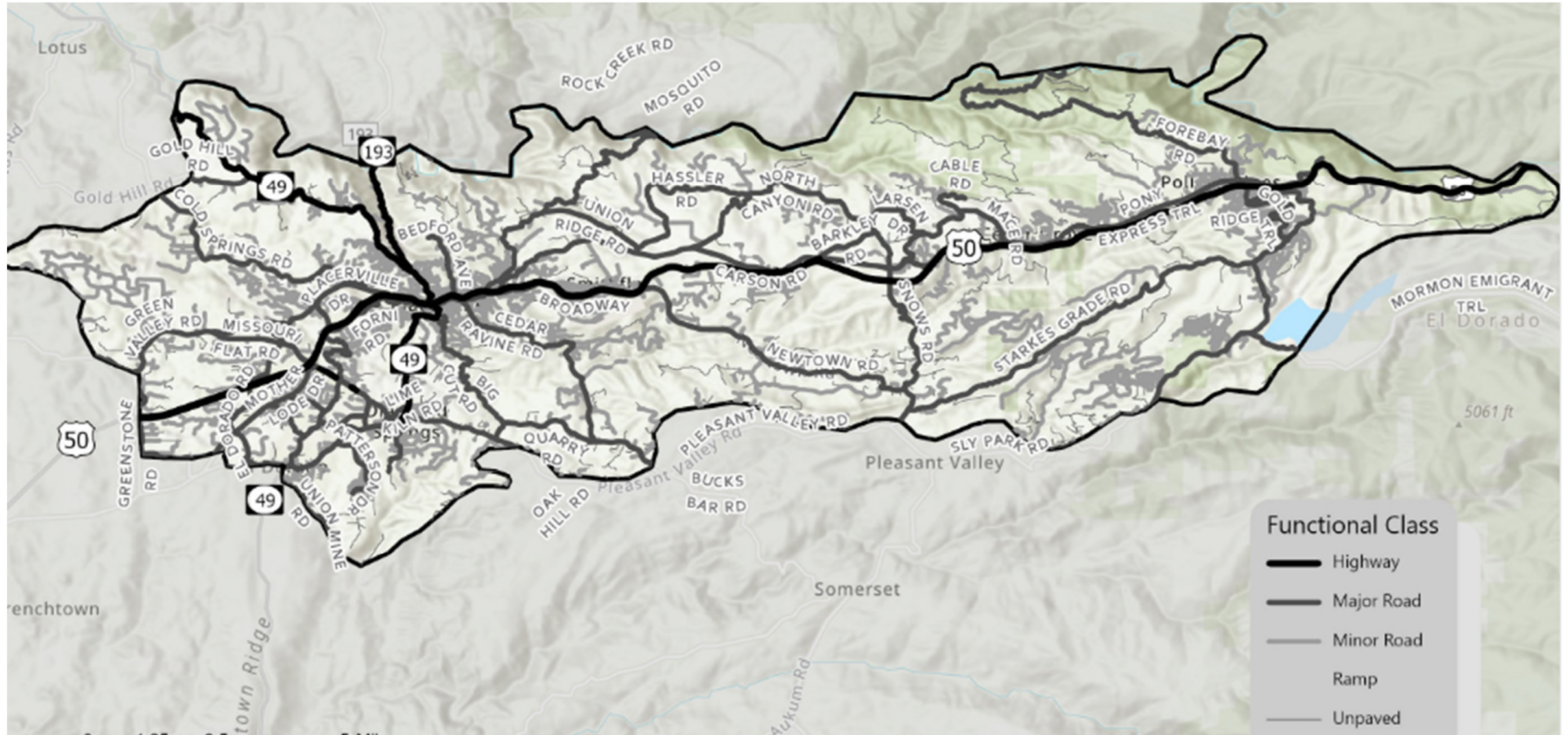
SOCIAL SENSITIVITY INDICATOR	CENTRAL	WEST	NORTH	EAST	SOUTH
Median Family Household Income	●	●	●		
Median Non-Family Household Income			●	●	●
People experiencing homelessness	Not Mapped				
Undocumented individuals	Not Mapped				
Unemployed	●				
Seniors		●		●	
Young Children				●	●
People of Color					
Renters		●	●	●	
Outdoor Workers		●	●		
Visitors	Not Mapped				
Linguistically Isolated	●				●
American Native and Alaskan Native		●		●	
Individuals with Disabilities		●		●	
Individuals with Asthma		●		●	
Individuals with Coronary Artery Disease	●		●	●	
Individuals without access to a vehicle	●		●	●	
Individuals without health insurance	●				
Households without a computer	●		●	●	
Households without broadband internet			●	●	●
Total Indicators	7	7	8	11	4



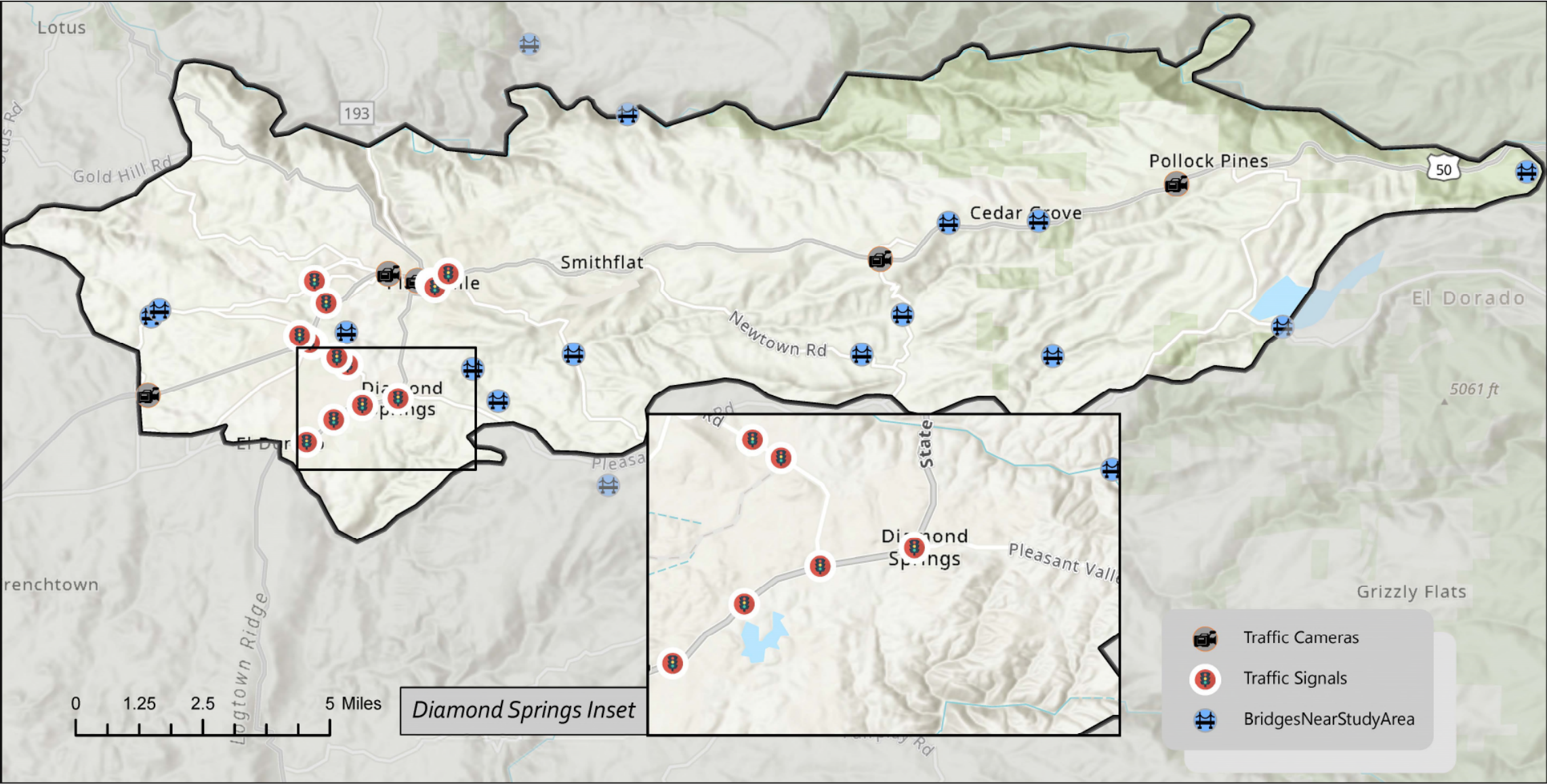


TRANSPORTATION NETWORK

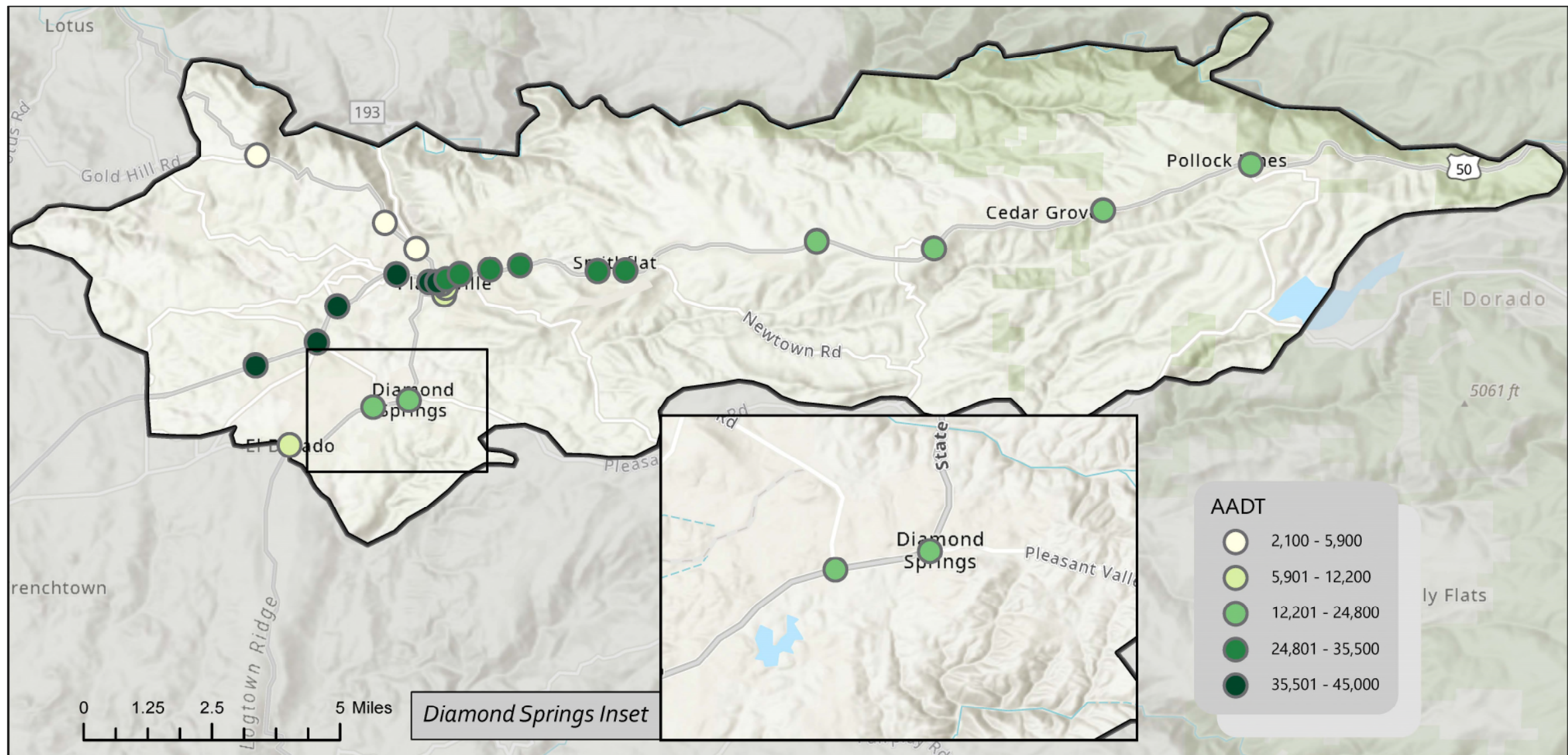
OUR NETWORK



BRIDGES, SIGNALS, AND CAMERAS



ANNUAL AVERAGE DAILY TRAFFIC



DAILY VARIATION

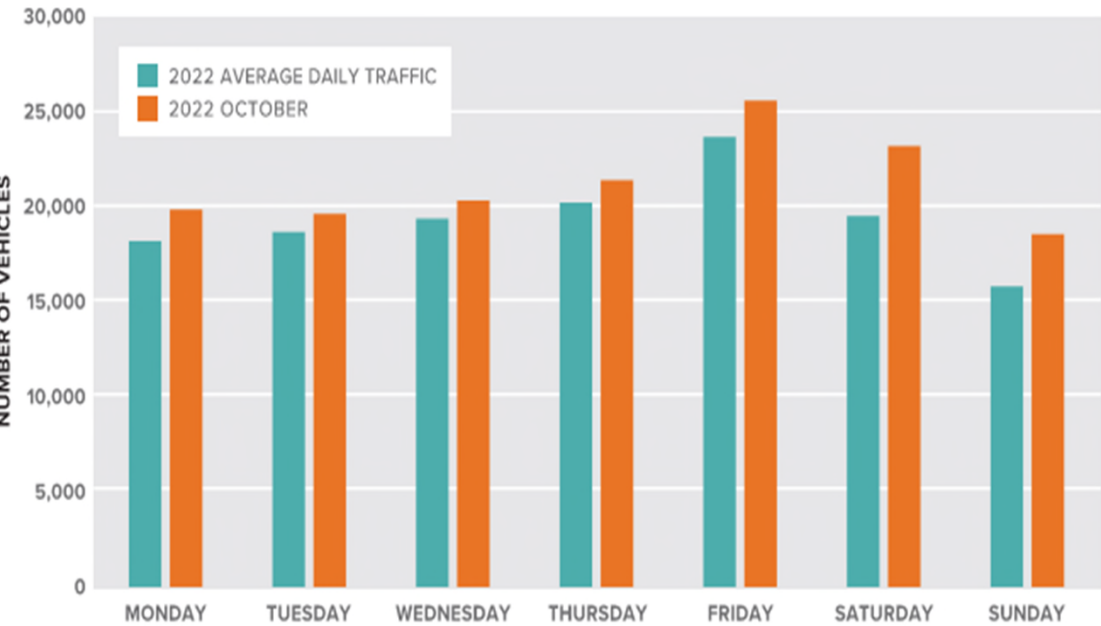


FIGURE 15. COMPARE DAY OF WEEK TRAFFIC VOLUME OF 2022 TO APPLE HILL SEASON

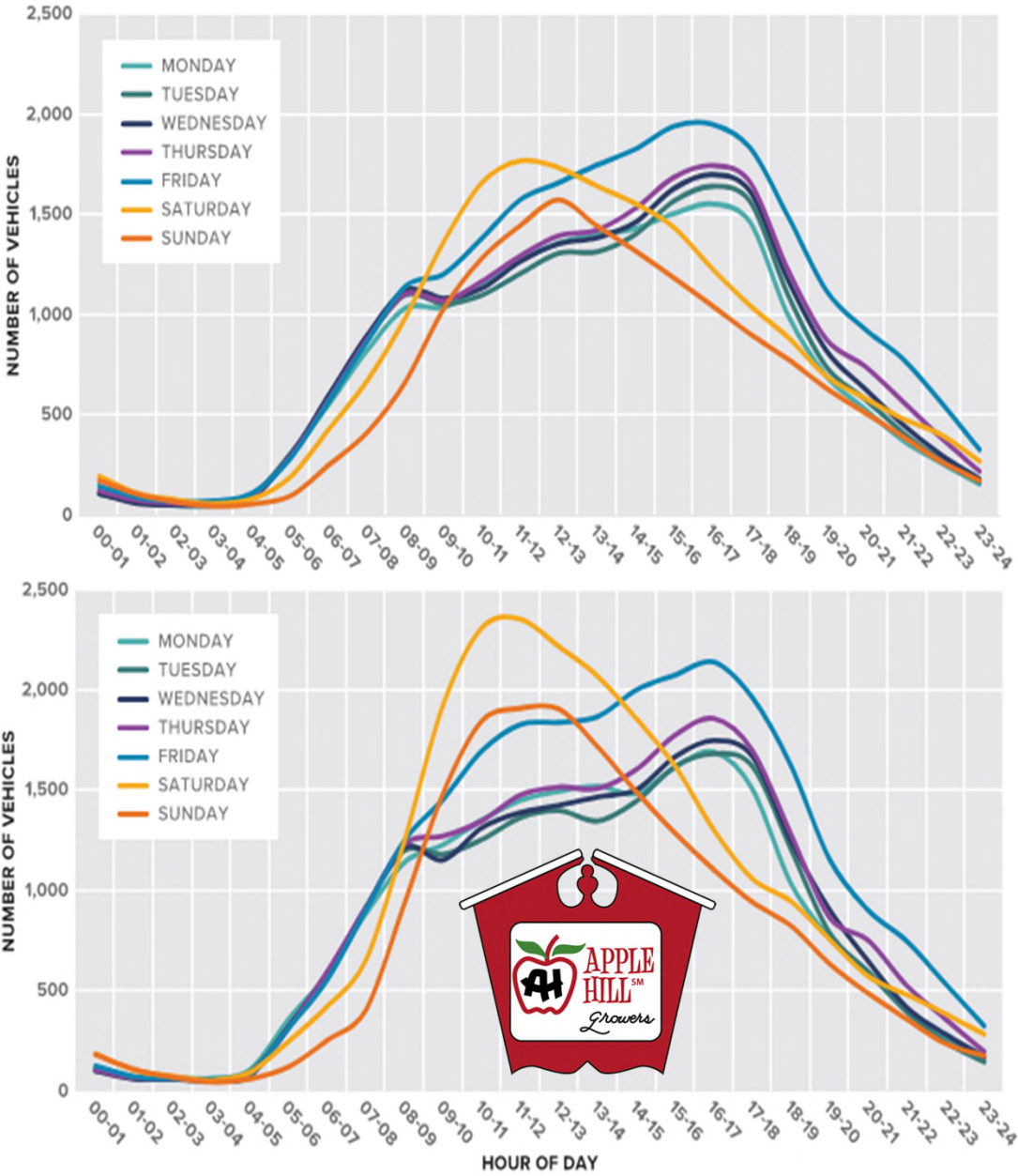
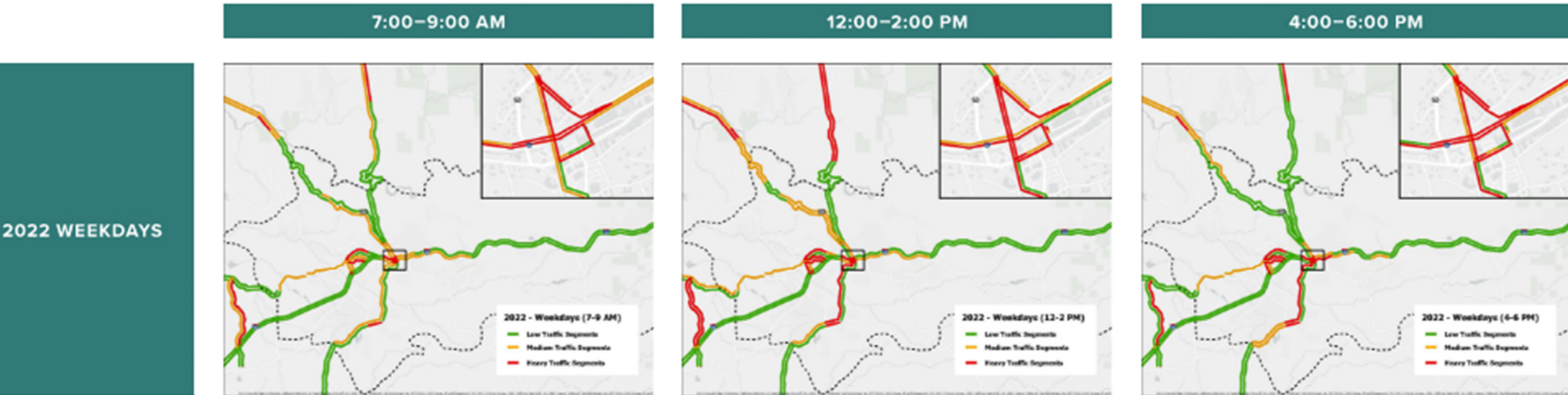


FIGURE 14. DAY OF WEEK PEMS TRAFFIC VOLUMES, OCTOBER 2022

WEEKDAY CONGESTION



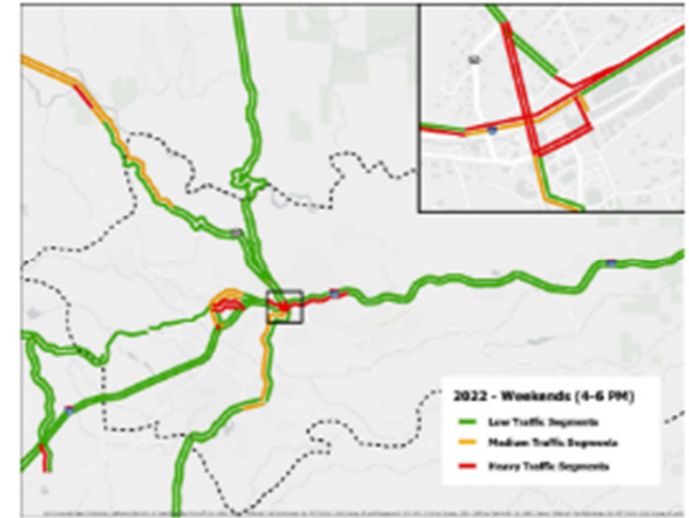
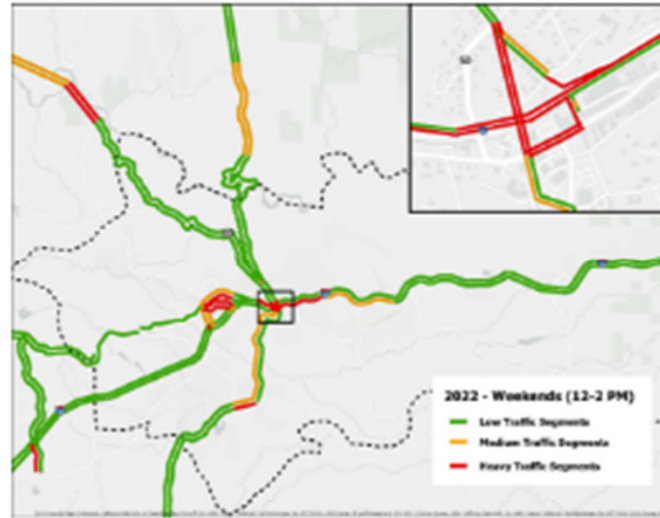
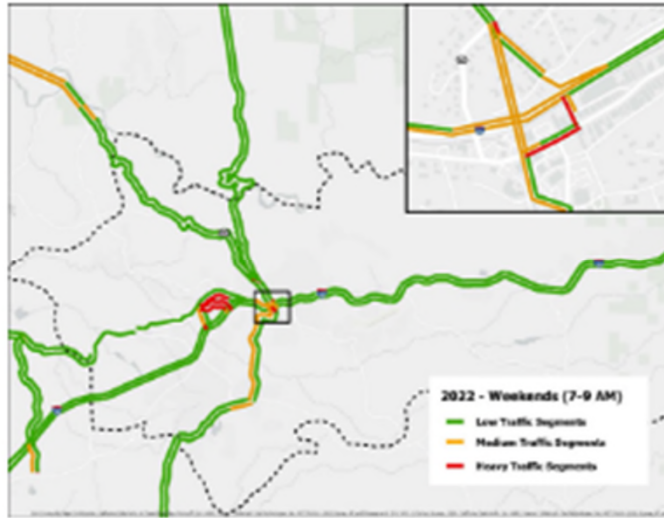
Heavy Traffic: < 75% of free-flow speed

Medium Traffic: 75%-90% of free-flow speed

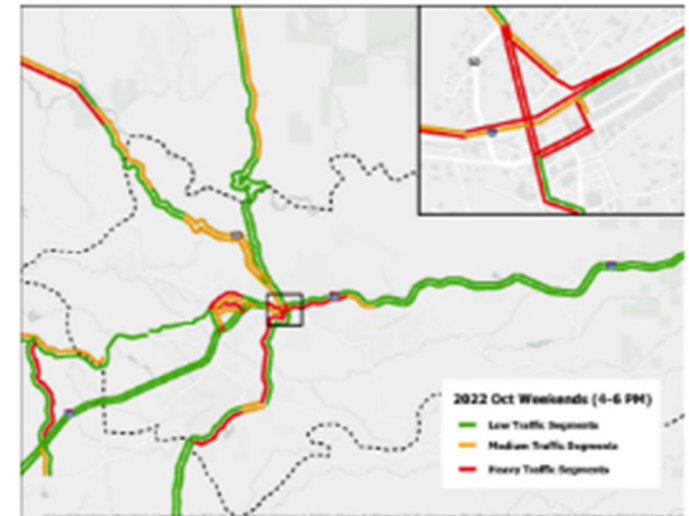
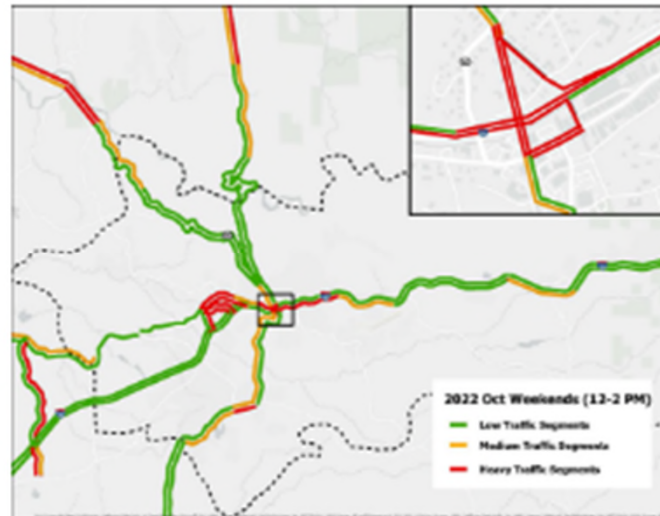
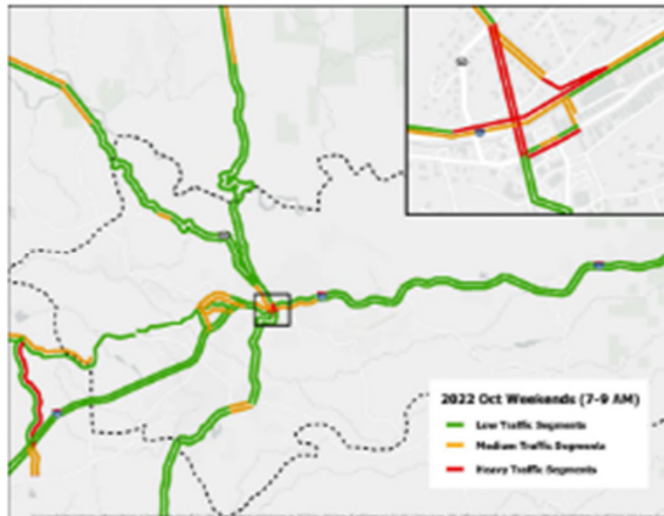
Low Traffic: > 90% of free-flow speed

WEEKEND CONGESTION

2022 WEEKENDS



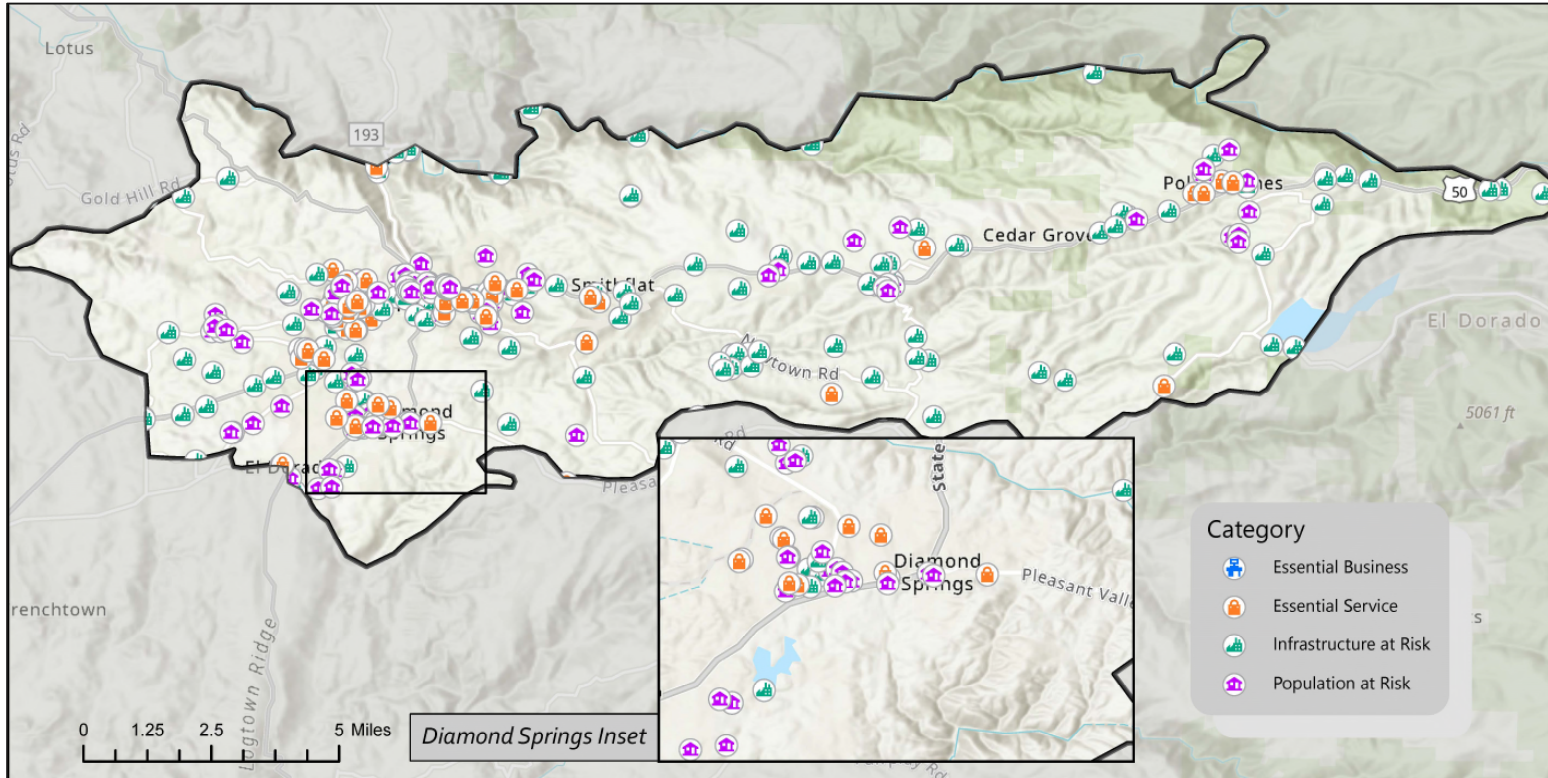
2022 OCTOBER WEEKENDS (APPLE HILL SEASON)





CRITICAL INFRASTRUCTURE

CRITICAL INFRASTRUCTURE



- COMMUNICATION NETWORKS,
- WATER SUPPLY SYSTEMS,
- POWER CONVEYANCE AND DISTRIBUTION



5

PLAN AND POLICY REVIEW

POLICY & PLAN REVIEW

LIMIT WILDFIRE RISK BY ESTABLISHING POLICY AND REGULATIONS FOR NEW DEVELOPMENT AND REDEVELOPMENT.

Table 4 Key Findings Summary

Category	Key General Gaps/Deficiencies
Private property and Public Facilities	City and County safety element policy gaps regarding development, private property, and public facilities
Roadway and Access	County safety element policy deficiency regarding roadway and street signage
Landscape and Fire Suppression	City and County safety element policy deficiencies regarding future water supply maintenance and fire break maintenance
Evacuation	City and County safety element gaps in addressing evacuation requirements
Community Engagement and Preparedness	City and County safety element gaps regarding public engagement and outreach efforts specifically for at-risk populations



PUBLIC OUTREACH

PUBLIC OUTREACH

- Project Website
 - Project overview
 - Meetings and Presentations
 - Document Library



IN THE COMMUNITY



IN THE COMMUNITY

Community-Based Organizations

Faith-Based Organizations

Service Providers

Education



PUBLIC OUTREACH – SOCIAL PINPOINT

Greater Placerville WILDFIRE EVACUATION PREPAREDNESS STUDY

Placerville Wildfire Evacuation Preparedness Study

Welcome to the Greater Placerville Wildfire Evacuation Preparedness Study!

This study will develop a wildfire evacuation preparedness plan for the Greater Placerville area. *Please provide your input about existing wildfire plans, potential wildfire hazard areas, and points of concern during a wildfire event.*

To leave your feedback drag one of these icons at the top of the page to a point in the map to leave a comment, suggestion or concern:

Drag to comment > Area of Concern Make a Comment Ideas and Suggestions

If you would like to view this in another language, please activate Google Translate by clicking this icon in the top right corner of your screen.

Si desea ver esto en otro idioma, active Google Translate haciendo clic en este icono en la esquina superior derecha de su pantalla.

[Get Started Now](#)

Map Instructions

Activity

Contact

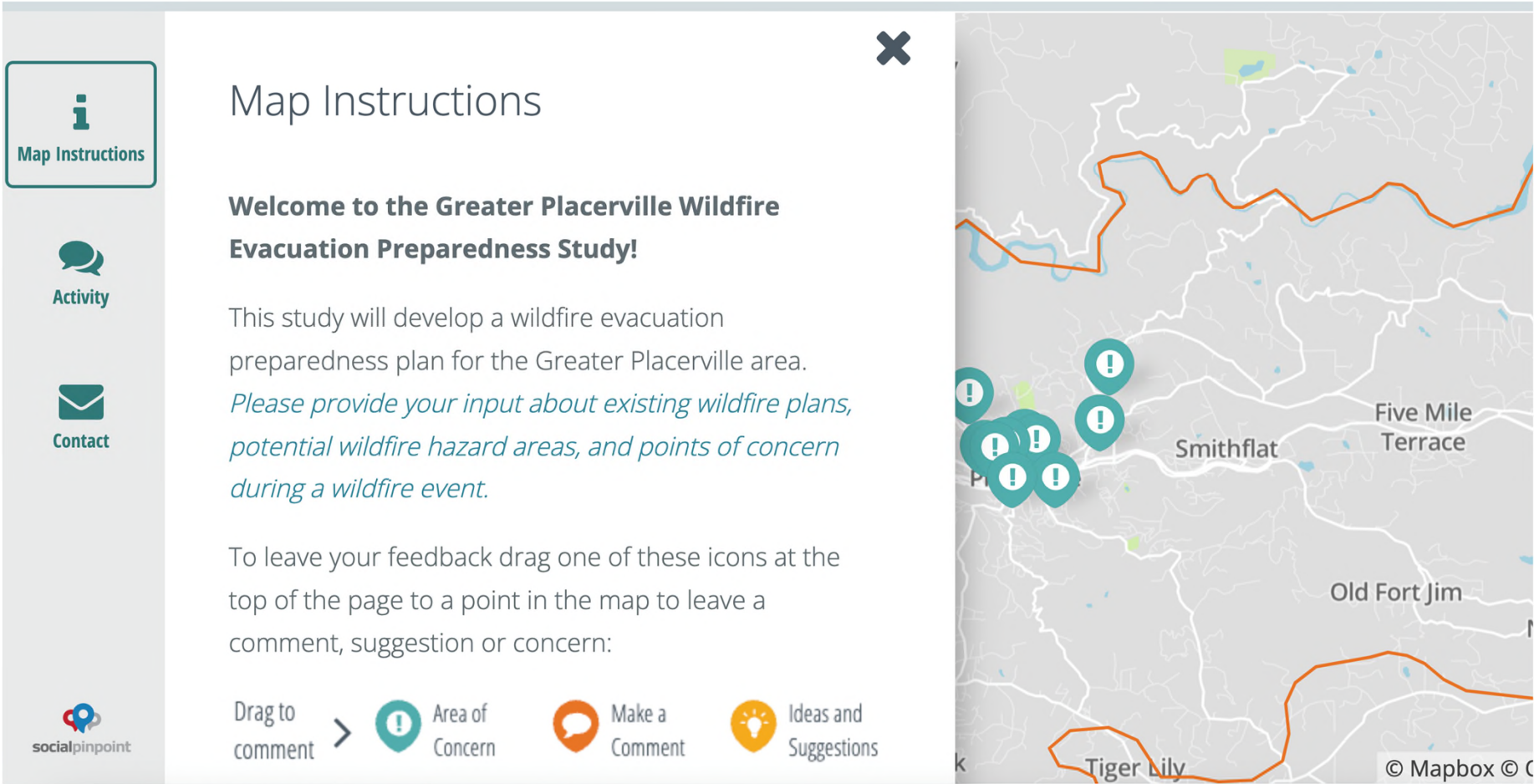
Legend

Study Area

PUBLIC OUTREACH – SOCIAL PINPOINT



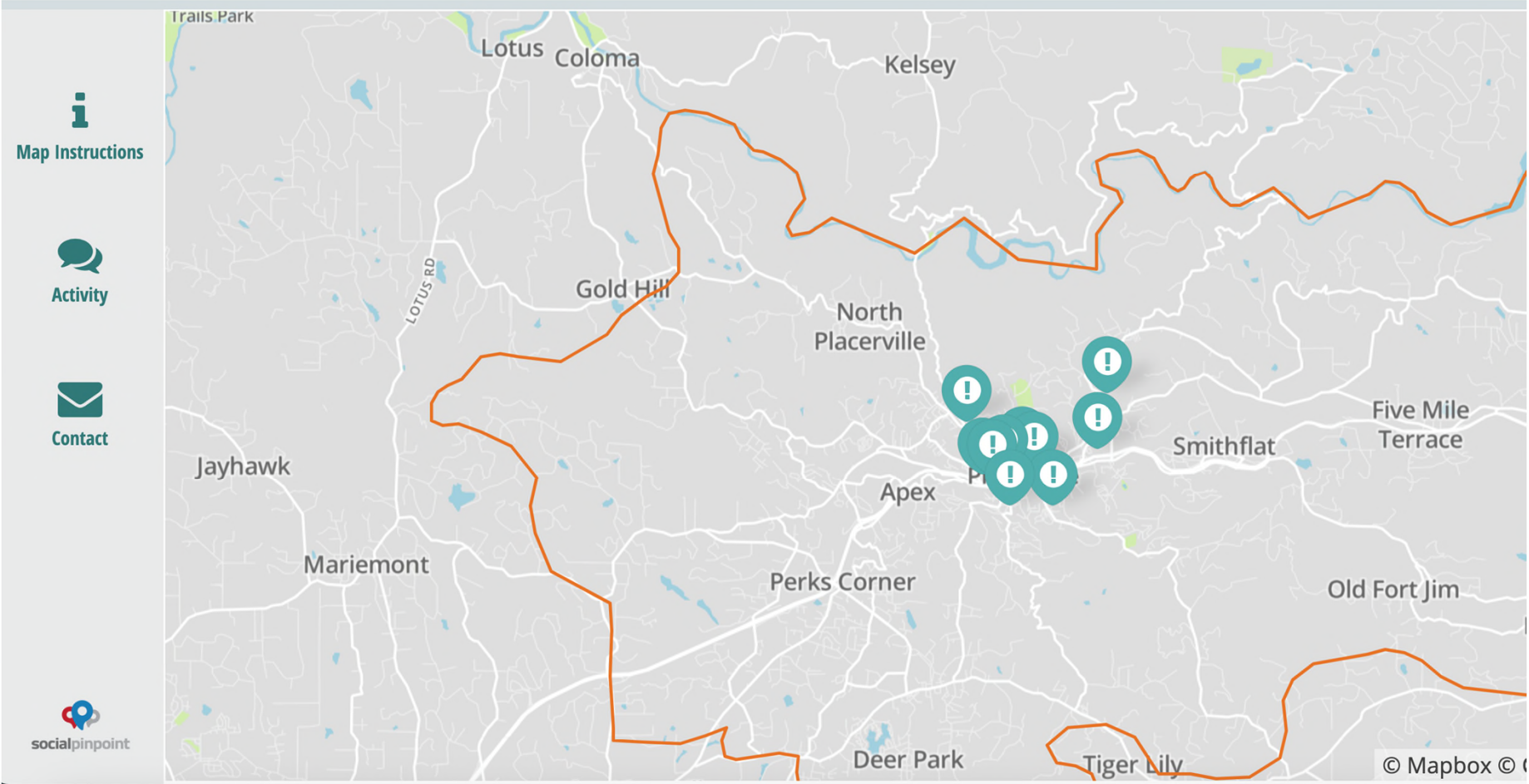
[+ Add Comment](#)




PUBLIC OUTREACH – SOCIAL PINPOINT




A green rectangular button with a white plus sign icon and the text "Add Comment" in white.




PUBLIC OUTREACH – SOCIAL PINPOINT









Substandard bridge to use during emergency response to the neighborhoods just north of US 50.


 Like

|

Dislike 

 a month ago

 Zoom in

NEXT STEPS

- Public Outreach & Project Marketing (throughout project)
- PDT/SAC Meetings & Agency Coordination (throughout project)
- Modeling and Analysis (Summer/Fall 2023)
- Infrastructure Improvements (Fall 2023)
- Improvement Implementation Plan (Fall/Winter 2023)
- Draft and Final Plan (Dec/Feb)
- Adoption and Project Completion (Feb 2024)



Greater Placerville
**WILDFIRE EVACUATION
PREPAREDNESS STUDY**

QUESTIONS!

INTRODUCTIONS

DAN BOLSTER

EDCTC

Agency PM

DBolster@edctc.org

530.642.5262

KENDALL FLINT

DKS Associates

Public Outreach Lead

kendall.flint@dksassociates.com

650.455.1201