

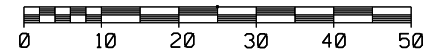
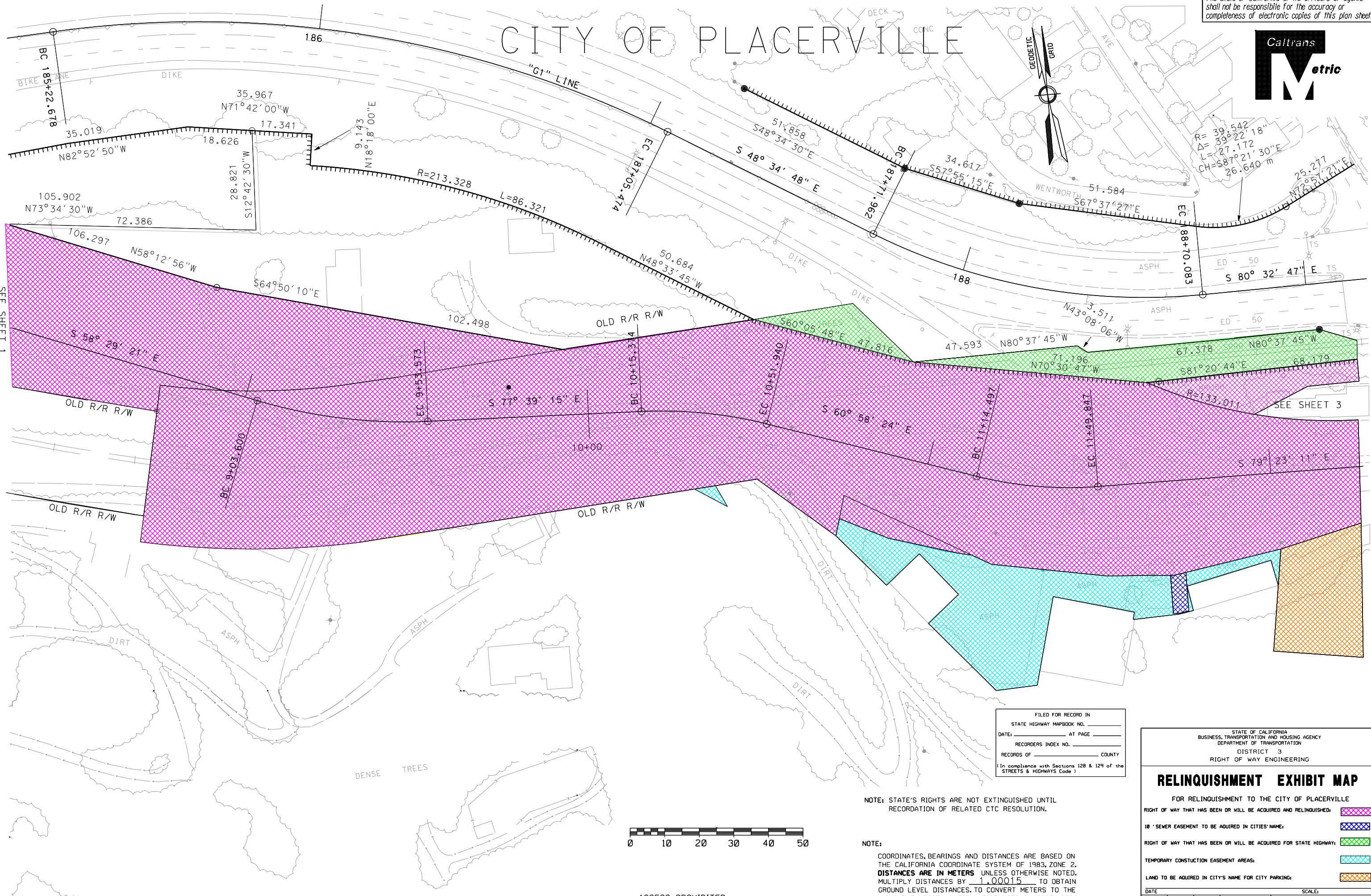
The State of California or its officers or agents shall not be responsible for the accuracy or completeness of electronic copies of this plan sheet.



# CITY OF PLACERVILLE



REVISIONS	DATE	REVISIONS	DATE	REVISIONS	DATE	REVISIONS	DATE



ACCESS PROHIBITED

NOTE: STATE'S RIGHTS ARE NOT EXTINGUISHED UNTIL RECORDATION OF RELATED CTC RESOLUTION.

NOTE:  
 COORDINATES, BEARINGS AND DISTANCES ARE BASED ON THE CALIFORNIA COORDINATE SYSTEM OF 1983, ZONE 2. DISTANCES ARE IN METERS UNLESS OTHERWISE NOTED. MULTIPLY DISTANCES BY 1.00015 TO OBTAIN GROUND LEVEL DISTANCES. TO CONVERT METERS TO THE U.S. SURVEY FOOT MULTIPLY DISTANCES BY 3937/1200.

FILED FOR RECORD IN  
 STATE HIGHWAY MAPBOOK NO. \_\_\_\_\_  
 DATE: \_\_\_\_\_ AT PAGE \_\_\_\_\_  
 RECORDERS INDEX NO. \_\_\_\_\_  
 RECORDS OF \_\_\_\_\_ COUNTY  
(In compliance with Sections 128 & 129 of the STREETS & HIGHWAYS Code.)

STATE OF CALIFORNIA  
 BUSINESS, TRANSPORTATION AND HOUSING AGENCY  
 DEPARTMENT OF TRANSPORTATION  
 DISTRICT 3  
 RIGHT OF WAY ENGINEERING

## RELINQUISHMENT EXHIBIT MAP

- FOR RELINQUISHMENT TO THE CITY OF PLACERVILLE
- RIGHT OF WAY THAT HAS BEEN OR WILL BE ACQUIRED AND RELINQUISHED:
  - 18' SEWER EASEMENT TO BE ACQUIRED IN CITIES' NAME:
  - RIGHT OF WAY THAT HAS BEEN OR WILL BE ACQUIRED FOR STATE HIGHWAY:
  - TEMPORARY CONSTRUCTION EASEMENT AREAS:
  - LAND TO BE ACQUIRED IN CITY'S NAME FOR CITY PARKING:

DATE	DIST.	CD.	RTE.	K.P./P.M.	SCALE:	SHEET NO.
03	ED	50	16.5/18.0			2 OF 5

^  
 DIRECTORY/project/route  
 FILE NAME .dgn  
 MICROFILMED